

MML

Mobil Man Lift

Support Unit for V22 Osprey

NSN-4920-01-540-2916



Parameters of design:

- Dependability under adverse conditions
- Ease of operation
- Maintainability
- Transportability

LIFT-A-LOFT

An Industry Leader for 50 Years

The MML was developed by Lift-A-Loft, Bell Helicopter, and NAVAIR specifically to support the V22 Osprey. This unit was designed for both ship board and land based operation and has many features that make it very maneuverable, dependable, easy to operate, and easy to maintain.

PERFORMANCE

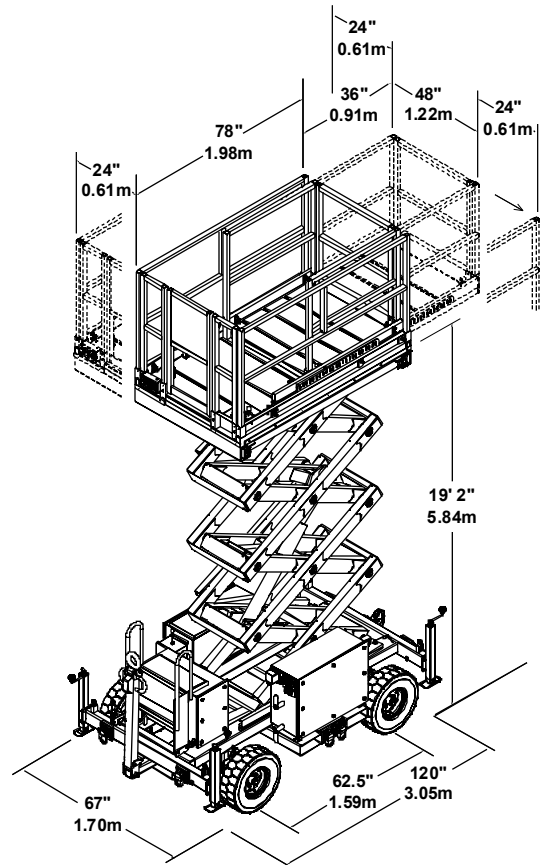
- Tow Speed – Up to 10 mph (16.1 k/hr)
- Platform Lift Speed – 0.18 ft/sec (0.05 m/sec)
- Platform Lower Speed – 0.32 ft/sec (0.10 m/sec)
 - Lift/Lower speed may vary according to load and temperature
- Maximum Platform Height – 19' 2" (5.84m)
- Working Height – 25' 2" (6.25m)
- Guardrail Height – 39" (0.99m)
- Maximum Platform Capacity Including Extenda-deck – 750 lbs (340.2 kg)
- Extenda-deck Capacity – 500 lbs (226.8 kg)
- Unit Weight – 3615 lbs (1639.7 kg)

FEATURES

- Platform – 48" X 78" (1.22 X 1.98 m)
- Platform Extenda-deck – 3 ft (0.91 m)
- Platform Traverse Side to Side – 2 ft (0.61 m)
- Outriggers for Increased Stability
- Hand Operated Brakes for Positive Unit Location
- Lift Operates from 110VAC Power or 24 VDC Battery Backup (Converted to 110VAC)
- Aircraft Bumpers
- Lifting Lugs
- Forklift Pockets

SAFETY FEATURES

- Scissor Spreader
- Self Closing, Self Latching Gates
- 39" (0.99m) Guardrails with Mid-rail and Toe Board
- Emergency Stop Button at Each Control Station
- Holding Valves on Lift Cylinder
- Emergency Lowering Controls at Platform or Base
- Non-Skid Tread Grip Deck
- Stabilizers and Tie Downs for Added Security



TESTING

- Environmental Test: MIL-STD-810E
- High Temp Test: 125° Operating 140° Stored
- Cold Temp Test: -20° Operating -40° Stored
- Humidity Test: Method 502.4
- Salt Fog Test: Method 509.4
- Blowing Sand & Dust Test; Method 510.4
- EMI Test: CE102, CS101, 114, 116, RE102-103
- Reliability Test: Including 750 Full Cycle Tests Without Failure
- Mobility Test: Including Sudden Stops, Rumble Strips, Slope Tests, etc.
- Stability Test: Tested at 11°, Fully Loaded, Raised, and Extended
- Air Transportability: Meets the requirements of MILSTD-1791